

NEW LOCATION

21st ANNUAL
PARA-EDUCATORS'
TRAINING CONFERENCE

Rochester Airport

October 4 & 5, 2007

Holiday Inn



★ ★ ★ ★ ★ ★ ★ ★ ★ ★ ★ ★ ★ ★ ★ ★
★ SAME CONFERENCE ★
★ OFFERED TWICE ★
★ ★ ★ ★ ★ ★ ★ ★ ★ ★ ★ ★ ★ ★ ★ ★

KEYNOTE

Up Your Attitude



Genesee Valley
School Boards Institute
for Staff Development



ENROLLMENT
LIMITED
215
PER DAY

KEYNOTE PRESENTATION

Steve Saffron

Up Your Attitude

Learn upbeat attitudes that accentuate the positive and eliminate negative criticism.

Developing a friendly school climate where everyone respects each other and enthusiastically works together to grow great kids is what Steve Saffron is all about!

DISCOVER, LEARN EXPERIENCE...

- ☺ How a positive, enthusiastic attitude gives rise to a happier, more productive workforce
- ☺ How positive humor breaks up routine, gets people's attention and promotes creativity and learning
- ☺ How having fun together is the fastest way to grow professionally and build team unity

ABOUT STEVE...

He is an upbeat, empowering speaker who educates, entertains and helps people lighten up while experiencing professional growth. With practical ideas, impeccable humor and dynamic team building exercises, he teaches his audience how to build a positive school climate.

For 25 years, Steve was full-time faculty, humor expert in residence and wellness motivation speaker for Scottsdale Community College. Steve is now Professor Emeritus for the 10 Maricopa Colleges throughout the greater Phoenix area. Steve now brings his vast experience and expertise to schools all over America.

WELCOME MESSAGE

October 2007

For the **FIRST TIME EVER** —

GVSBI is offering the exact same conference on 2 different days!

Thank you for taking time to consider the value of this conference. This training conference has been developed by para-educators (*just like you!*) to meet the needs of a variety of personnel in school districts. Everyone from the classroom aide to the teaching assistant to the hall monitor will benefit from the insight provided by the experienced session presenters.

We offer the opportunity for you to earn a certificate, which can be applied to professional development criteria, for Recognizing Child Abuse and S.A.V.E. training.

The price can't be beat! The registration fee, which includes breakfast, lunch and materials, is very reasonable and public school districts can receive state aid by cross-contracting an individual's attendance through their BOCES.

By opening this flyer, you've opened the door for **YOUR** professional growth. We hope to see many of you

Up Your Attitude

99% of respondents would recommend this conference to another colleague!

The Conference Planning Committee

CONTACT INFORMATION

Conference Coordinator—Lorry Whipple

Phone: 315-332-7282

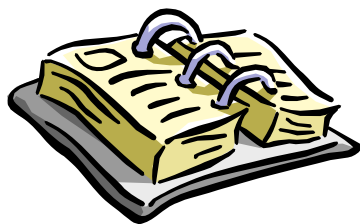
Fax: 315-332-7425

E-mail: lwhipple@wflboces.org

www.gvsbi.org

SCHEDULE

7:45	8:30	Registration
8:30	8:45	Welcome
8:45	10:15	Keynote—Steve Saffron
10:15	10:30	Break
10:30	12:00	Session 1
12:00	1:15	Lunch
1:15	2:45	Session 2



WORKSHOPS & SPEAKERS

A Autism & Aspergers

Rebecca Etlinger & Suzanne Till
Monroe 1 BOCES

Asperger's Syndrome is increasing in prevalence in our schools. Students with this diagnosis have social skill deficits that may affect peer relationships, self-esteem, a sense of belonging and as a result, academic performance. The basis for this presentation is the use of the children's book, "To Be Me" to help facilitate discussions regarding differences and acceptance of others. Students need to be educated so that they won't make incorrect assumptions about others. Participants will participate in a discussion and various exercises to help learn the importance of acceptance, as well as how to help teach this to our students.

B Drugs & Youths **Paul Kelly** **NY State Police**

There is a curiosity/need to know about: the devices used to ingest the drugs; how kids transport them into schools (show & tell for these first 2 items); what signs should you recognize that lead to suspecting use; are there behaviors that indicate a possible sale; what drugs are popular and prevalent; what does the drug do to you, etc. These questions & more may be addressed in this session.

D Why Can't You Think & Act Like Me **Roxanne Romera & Michelle Lewis** **Unlimited Coaching Solutions**

Participants will gain an understanding of four different behavior styles. Participants will identify personal characteristics of styles and gain a better understanding of what makes people act and react the way they do. Participants will learn what motivates and de-motivates individuals and how to capitalize on other people's strengths. Learn to understand people and make a positive impact in the workplace.

C GANGS

Moses Robinson
Rochester City Police
SRO @ East High School

It's not just an inner-city problem any more. The need to belong and be accepted into a peer group is strong in our adolescents. Learn what turns a peer group into a gang and why the need for gangs exists. Discuss the symbols of gang membership and how to recognize the clues that someone is involved in gang activities. Discuss how gangs impact the learning that goes on in our school systems.

E Creative Team Building **Steve Saffron**

Learn to put fun to work to create a high-powered, totally dedicated team that will help students enjoy being in your classroom. These techniques can be applied to relationships beyond teacher/para to make life in general more fun.

WORKSHOPS & SPEAKERS

F NYS Employees' Retirement System

Arlene Hanley, NYSUT

OFFERED
10:30—12:00
ONLY

G The Stress Relieving Benefits of Yoga

Cheryl Prockton

OFFERED
1:15—2:45
ONLY

NOT FOR TEACHING ASSISTANTS. This will be a summary of what the Employees' Retirement System is all about. Find out who can be a member, what the benefits of being a member are, and what to look for down the road. In addition to a detailed handout, Arlene will answer questions about Tiers 1 through 4.

Your active participation in this course will teach you about the effects of stress and how you can use simple yoga techniques to relieve daily pressures. Less pressure and stress makes for a happier, more productive employee. Individuals should dress comfortably and bring a towel or mat for floor work and either a rubber band, rope or old tie for stretching.

H Paraprofessional Power: Helping Students Become Independent Learners

Jan Gubiotti & Beth Sugg, L.E.A.R.N.

ALL DAY
SESSION

This fast-paced, interactive workshop emphasizes the important role of the para-educator and techniques that can be easily implemented with students. It also includes ideas for managing the teacher/aide relationship and improving communication. The workshop is filled with effective strategies and best practices that will empower paraprofessionals to help children learn. Paraprofessional Power, the easy-to-use and informational handbook, is offered at a special workshop cost of \$13. Please make checks payable to LEARN.

GVSBI strives to create an accessible & barrier free meeting for ALL people. If auxiliary aids or services are required, please contact Lorry as soon as possible to discuss your requirements. A minimum of 48 hours notice is required to cancel services to avoid being charged for their cost.

CERTIFICATION WORKSHOPS

I Recognizing Child Abuse Certification
Betsy Armes & Veronica Plavonich
Monroe 2-Orleans BOCES

**ALL DAY
SESSION**

This is an in-depth discussion of what is child abuse, how you recognize it, and your responsibilities to the child and the district. Certificates are processed through the Adult Education Department at Monroe 2-Orleans BOCES.

NOTE: Need a minimum of 20 participants to be offered.

J S.A.V.E. Certification
Melissa Stuart
Wayne-Finger Lakes BOCES

**ALL DAY
SESSION**

This training meets the requirements as put forth in the NY State S.A.V.E. legislation. It is intended for anyone pursuing certification. Training includes a brief study in the warning signs of violence and other troubling behaviors, statutes, regulations and policies relating to a safe, non-violent school climate; effective classroom management techniques; intervention techniques; and how to participate in a referral process.

CERTIFICATION FEE

There is a certificate processing fee in addition to the conference registration fee for these two courses:

Recognizing Child Abuse	\$10	
S.A.V.E.	\$10	

IMPORTANT REGISTRATION INFORMATION

Due to space limitations, we can only accept 215 registrations per day. Registration forms will be processed in the order received (first come/first served). Registrations received beyond the 215 will be placed on a waiting list in the order in which they are received. If space is available on the other day, we will attempt to contact you to determine your ability to switch days. You will then have 24 hours to secure your supervisor's authorization for the switch and relay that information back to us in writing (fax or e-mail). It is YOUR responsibility to check the website (www.gvsbi.org) to determine if you are registered. If your name does not appear, you are NOT registered.

MAP & DIRECTIONS—Airport Holiday Inn

Directions: From the NY State Thruway (Route 90), take Exit 46 to 390 North towards the Rochester Airport and exit at 18A (Brooks Avenue East).



CONFERENCE CANCELLATION

If a "state of emergency" is declared in Monroe County, the conference is automatically cancelled. A "state of emergency" is the ONLY reason we would cancel the conference.



TRANSMITTAL INSTRUCTIONS

MAIL TO:

Lorry Whipple, Conference Coordinator
Genesee Valley School Boards Institute
131 Drumlin Ct., Eisenhower Bldg.
Newark, NY 14513-1863

FAX TO: 315-332-7425

**Must be received by
September 26, 2007**

ATTENDEE CANCELLATION POLICY

September 26 is the deadline for cancellations to avoid being billed. If you are unable to attend after this date, please send a substitute and call Lorry with the name change.

REGISTRATION INFORMATION

Registration Fee: \$92* per person

(includes refreshments and materials)

* \$78 for participants from GVSBI "member districts".
Check with your business office.

PUBLIC SCHOOL DISTRICTS:

- Your district will be billed. Do not send payment
- Complete the registration form & have it signed by your supervisor
- Send (US mail or fax) as indicated
- Have your business office initiate a cross-contract through your BOCES

OTHERS (individuals, Rochester City, non-public schools, etc.):

- Pre-payment is REQUIRED
- Make your check payable to Wayne-Finger Lakes BOCES
- Send via US Mail



VENDORS

A select group of vendors will be available to enhance your conference attendance and

provide you a mini shopping experience.

REGISTRATION CONFIRMATION

Be sure we have received your registration form.

Visit: www.GVSBI.org

Click on "Para-Educators"

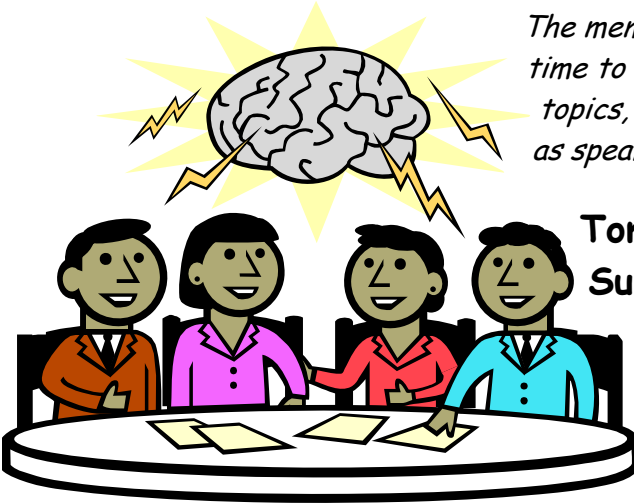
Look for the "Registrations Received" box.

Check for your name under your District.

We update the list every few days. This is the only confirmation available.

COMMITTEE MEMBERS

The members of the conference planning committee give their time to developing the program. They attend meetings, select the topics, suggest presenters, work the registration tables and act as speaker buddies. This year's committee members are:



Tom Arena, Monroe 1 BOCES

Susan Beutnagel, Monroe 2-Orleans BOCES

Margie Brumfield, Rochester City

Arlene Hanley, Rochester City (Retired)

Joyce Johnson, Monroe 1 BOCES

Betty Peterson, Rochester City

Maria Piampiano, Avon CSD

Vicki Brew, Monroe 2-Orleans BOCES

Jewell Brown, Rochester City

ENROLLMENT LIMITED TO
215 PER DAY

**Sessions fill quickly.
Please return your
registration form promptly.**



**Genesee Valley School Boards
Institute for Staff Development**

131 Drumlin Court
Eisenhower Building
Newark, NY 14513-1863

Phone: 315-332-7282

Fax: 315-332-7425

Email: lwhipple@wflboces.org

www.GVSBI.org

**Provider of Professional
Development Opportunities**

BOCES AID

BOCES aid is available. School business officials should contact their local BOCES and request a cross-contract with the Wayne-Finger Lakes BOCES.

REGISTRATION FORM PARA-EDUCATORS

ROCHESTER AIRPORT HOLIDAY INN 7:45 A.M. TO 2:45 P.M.

Pick a Day ► _____ Thursday, Oct 4 OR _____ Friday, Oct 5

If you do not pick a day, you will NOT be registered.

Participant's Name ↑ (please print to appear on your nametag & certificate)		↑ Position/Title	
District & Building/Department ↑		↑ E-mail Address	
District Street ↑			
District City/State/Zip ↑			
()		()	
Daytime Phone Number ↑		↑ Emergency/Home Phone Number	

CONCURRENT SESSION SELECTIONS

CHOOSE ONE WORKSHOP FOR EACH TIME SLOT.	8:45 to 10:15	10:30 TO 12:00	1:15 TO 2:45
A) Autism & Aspergers	KEYNOTE PRESENTATION STEVE SAFFRON		
B) Drugs & Youths			
C) Gangs			
D) Why Can't You Think & Act Like Me?			
E) Creative Team Building			
F) NYS Employees' Retirement System			
G) Stress Relieving Benefits of Yoga			
H) Paraprofessional Power: Helping Students... (double session)			
I) Recognizing Child Abuse (double session—certification fee)			
J) S.A.V.E. Training (double session—certification fee)			
ALTERNATE— (Select letter/different from <u>your</u> choices above)			
LUNCH SOUP (CHOOSE ONE)	[] CREAMY POTATO		
	[] CHICKEN RICE VEGETABLE		

Served with a chef salad, variety of breads/breadsticks/crackers, fruits, dessert buffet and assorted beverages

PLEASE NOTE medical meal considerations: _____

REQUIRED Signature of Authorizing Administrator: _____

No refunds after 9/26. No-shows will be billed. Districts are encouraged to send a substitute.

PLEASE RETURN BY SEPTEMBER 26, 2007
FAX # 315-332-7425 ATTENTION: LORRY WHIPPLE
CHECK THE WEBSITE (WWW.GVSBI.ORG) TO BE SURE YOU'RE REGISTERED!



**Genesee Valley School Boards
Institute for Staff Development**

131 Drumlin Court
Eisenhower Building
Newark, NY 14513-1863

Phone: 315-332-7282
Fax: 315-332-7425
Email: lwhipple@wflbooces.org
www.GVSBI.org

www.GVSBI.org

**Provider of Professional
Development Opportunities**

A decorative border consisting of a series of arrows pointing upwards and to the right, arranged in a rectangular frame around the central text.

**21st ANNUAL PARA-EDUCATORS'
TRAINING CONFERENCE**

**NEW
LOCATION**

**October 4 & 5, 2007
7:45 a.m. to 2:45 p.m.**

**FREE
PARKING**

**Rochester Airport Holiday Inn
911 Brooks Avenue**